

Creating a playlist in edtv (Vbrick)

This will show you how to add to your playlist - as well as mark start and end points within a video

Creating a playlist and marking start/end will **NOT CHANGE THE ORIGINAL IN ANY WAY!**

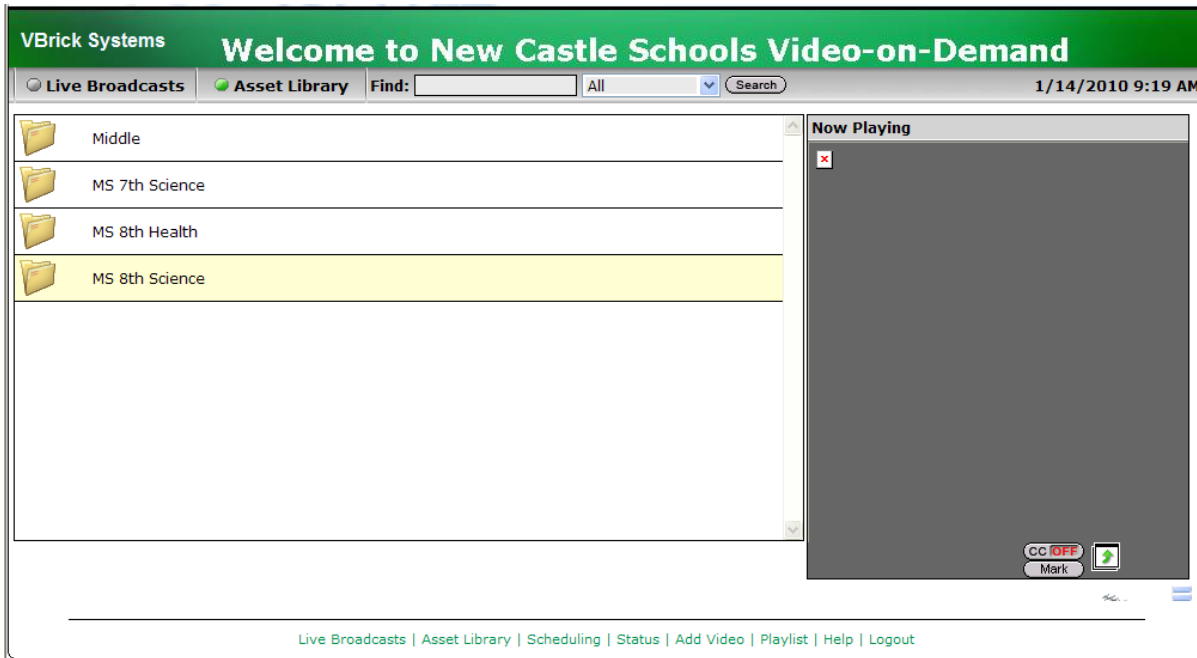
You do **NOT** have to mark a start or end point to add a video to your playlist. That is just another option available to you if you want to only show one or many sections of a video instead of the entire video.

Search is **only** available from the Asset Library, individual folders and your MyMedia folder. It is **NOT** available while you are in your playlist.

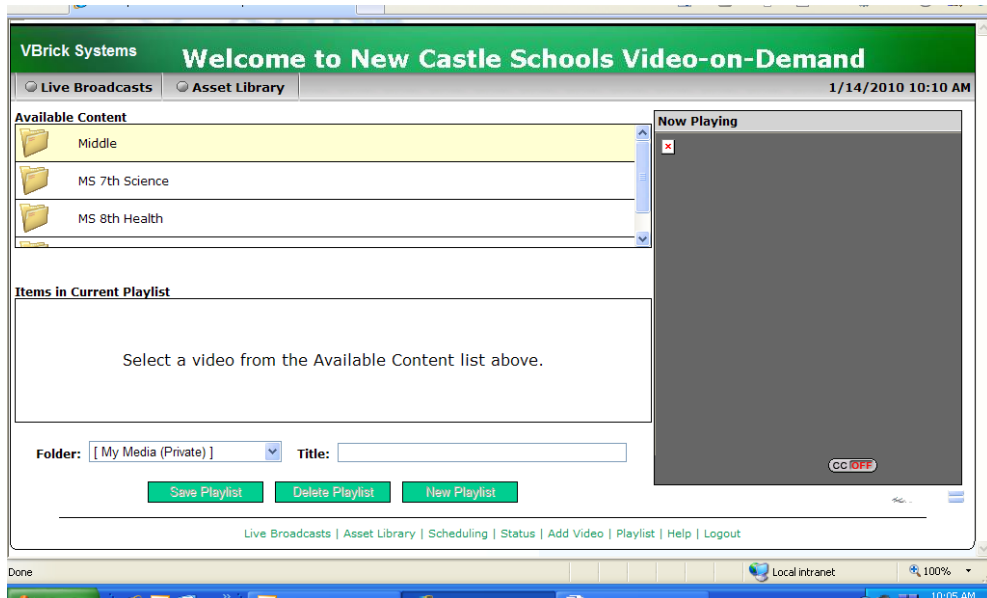
Use Search to narrow your results **BEFORE** clicking Playlist to create or edit a playlist.

Example in this handout is for middle school staff member

After logging on to edtv - you will see this screen



Click Playlist (found at the bottom your screen)

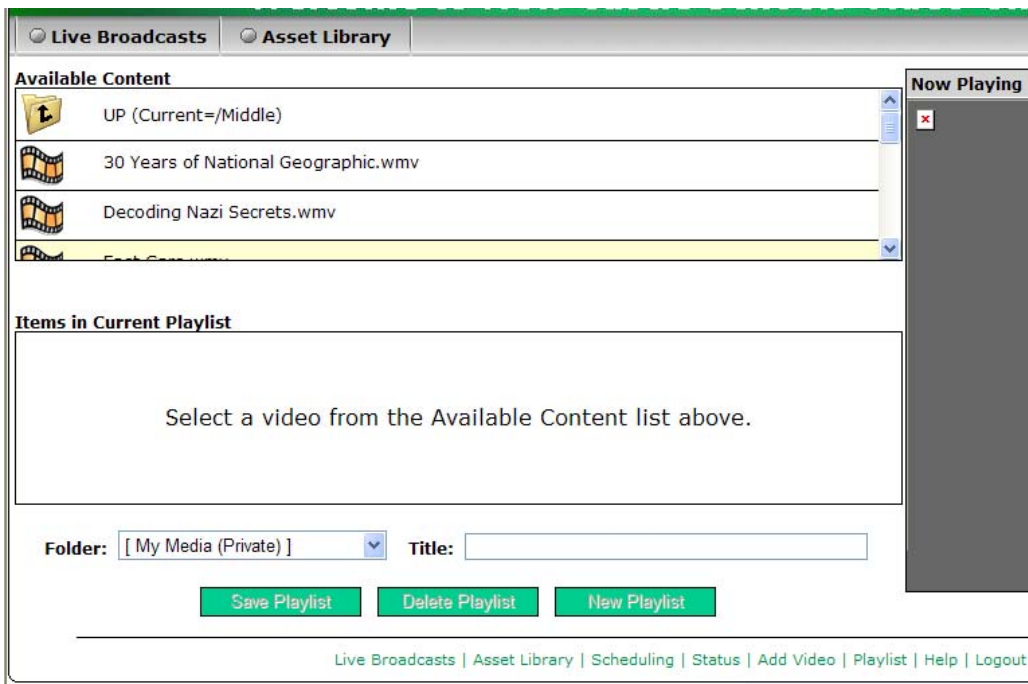


This window will open

Now you can click on the folders you have access to and scroll to find a video to add to your playlist. Videos are listed alphabetically by title. If the title starts with a number - it will be listed first.

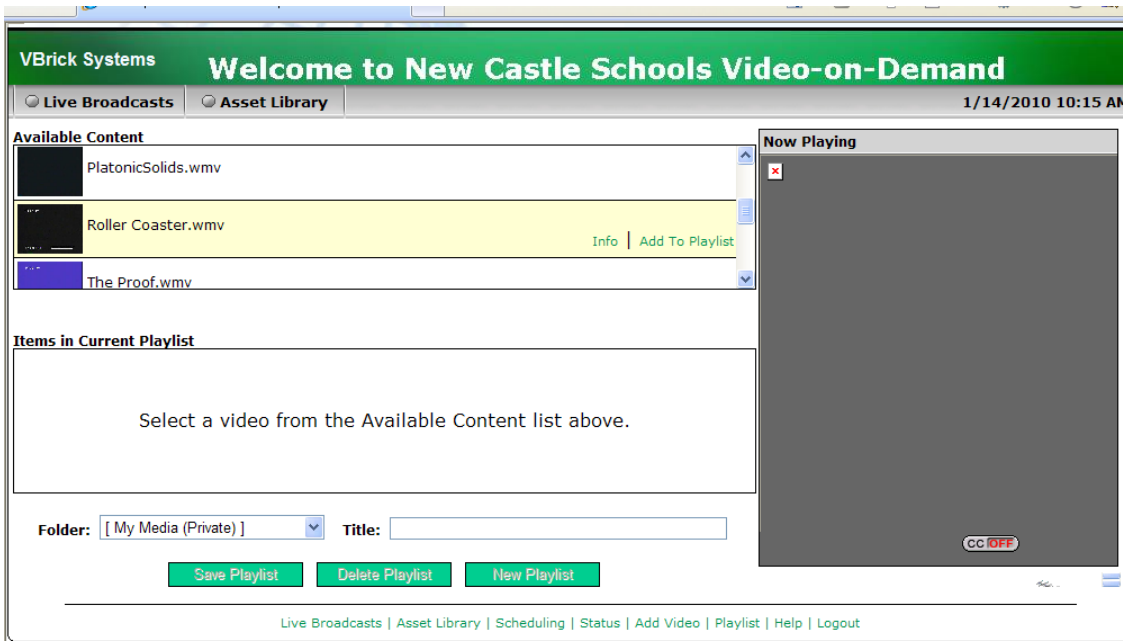
To use the search feature - you must do that before you start your playlist!

This is what you will see when you click on one of your folders to look for videos

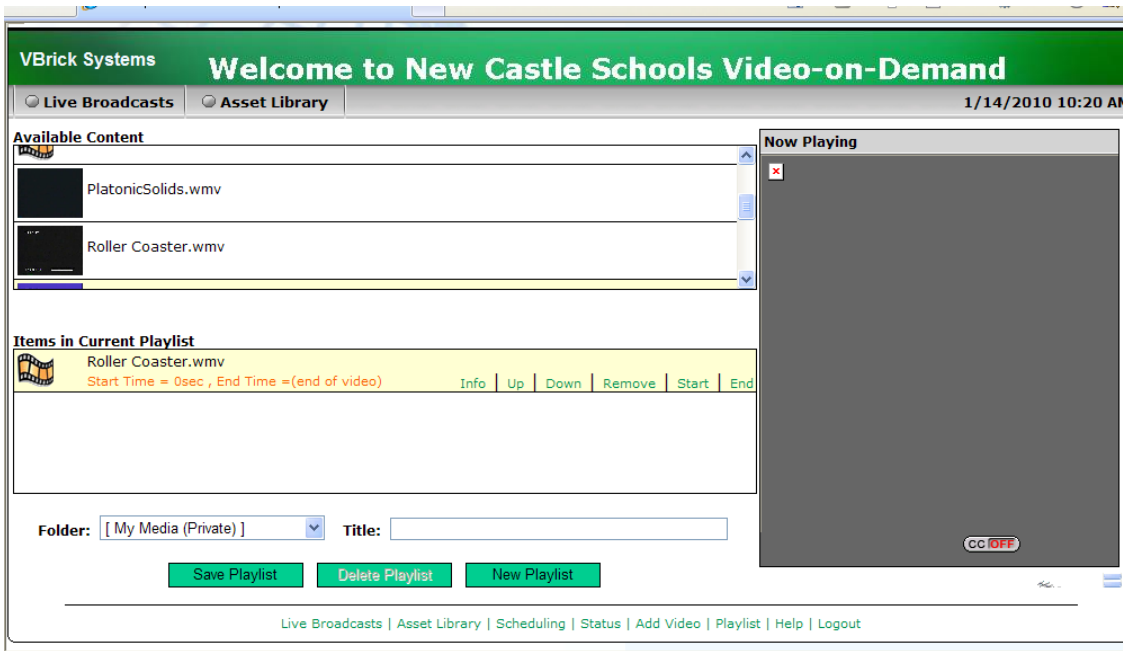


Now you are ready to add to your playlist

Rest your pointer on the video you want. You will see to notations to the right (just next to the video window) Info | Add To Playlist



After clicking "Add to Playlist" You will now see it listed in the "Items in Current Playlist" area



Now we are ready to set our start and end times

Click on the video name to start playing - for this example - click on the words Roller Coaster.wmv

VBrick Systems **Welcome to New Castle Schools Video-on-Demand**

Live Broadcasts Asset Library 1/14/2010 10:39 AM

Available Content

- PlatonicSolids.wmv
- Roller Coaster.wmv** Info Add To Playlist

Items in Current Playlist

- Roller Coaster.wmv**
Start Time = 0sec, End Time = (end of video) Info Up Down Remove Start End

Folder: [My Media (Private)] Title: _____

Save Playlist Delete Playlist New Playlist

Live Broadcasts | Asset Library | Scheduling | Status | Add Video | Playlist | Help | Logout

The video will start playing. At this point - you can drag the slider in the video window to the point you want to make your "start" - or if you aren't sure where you want to start - let the video play until it reaches where you want to start.

If you drag the slider, give the video a chance to catch up (buffer) so that it starts playing again



Click the Pause button (not stop)

Now click the word Start

You will see there is now a time after Start Time

Items in Current Playlist

- Roller Coaster.wmv**
Start Time = 13min, End Time = (end of video) Info Up Down Remove Start End

Folder: [My Media (Private)] Title: _____

Save Playlist Delete Playlist New Playlist

Live Broadcasts | Asset Library | Scheduling | Status | Add Video | Playlist | Help | Logout



To set an end time - click Play

Drag the slider to your end point - remember to let video catch up/buffer - or let video play to where you want your end point

Click Pause

Click End

You will see a start and end time listed

Items in Current Playlist	
	Roller Coaster.wmv Start Time = 15min , End Time = 22min

Don't forget to name your playlist

Folder: Title:

[Live Broadcasts](#) | [Asset Library](#) | [Scheduling](#) | [Status](#) | [Add Video](#) | [Playlist](#) | [Help](#) | [Logout](#)

How to go back and play your clip

Click on Asset Library

Click on the MyMedia folder (that is where your selections are saved)




You can see the named playlist "Lesson on motion"

Click that link

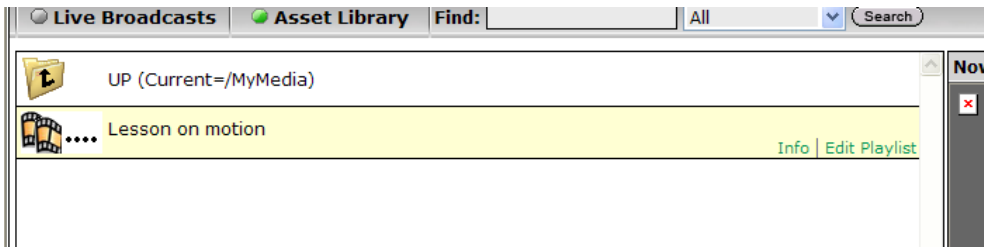
Your selected clip will play

VBrick Systems **Welcome to New Castle Schools Video-on-**

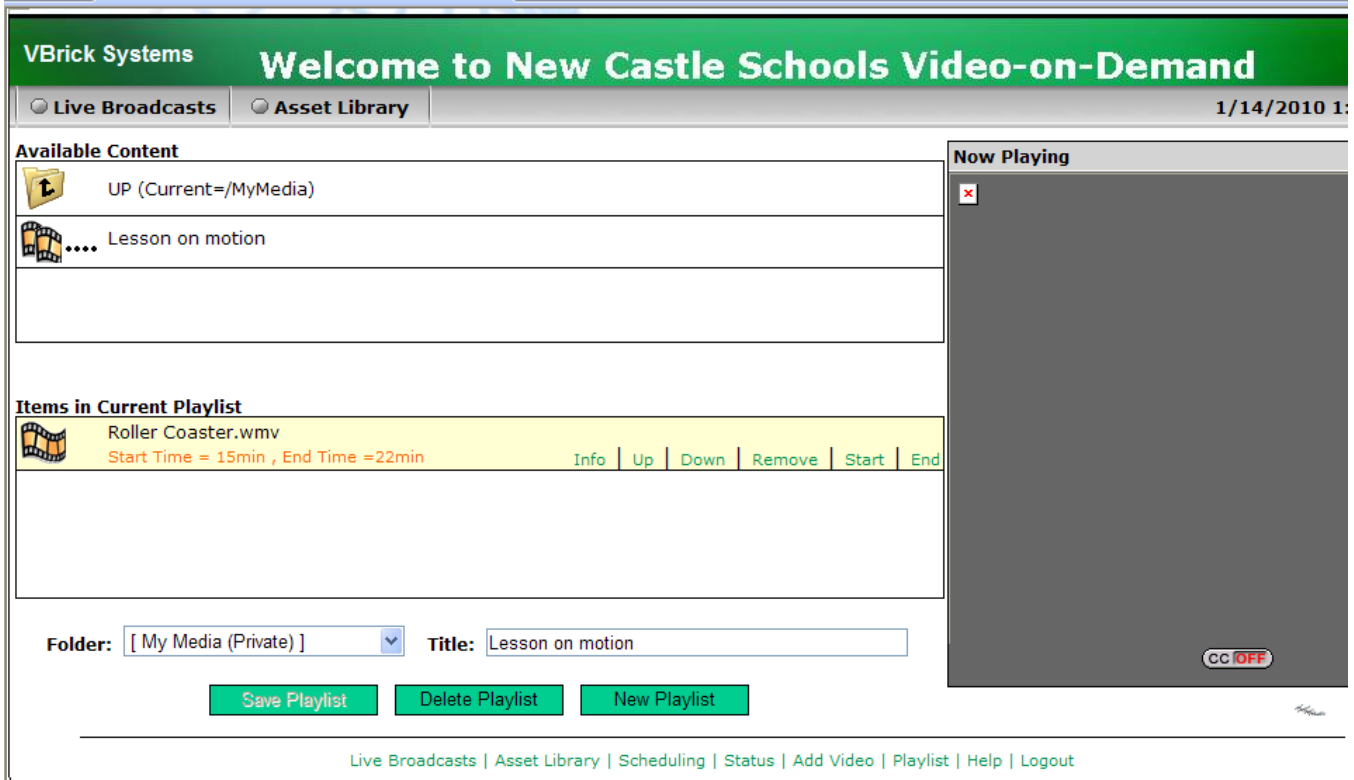
Live Broadcasts Asset Library Find: All

 UP (Current=/MyMedia)	Now Playing 
 Lesson on motion	

If you want to add more clips/videos or make changes - rest your pointer on your playlist
And then click Edit Playlist



Clicking Edit Playlist will open your playlist



Click the UP (Current=/MyMedia) to go back to the folders where videos are located. And you can add to an existing playlist or start a new one.

Remember that entire videos can be added to your playlist - you do not have to set start/end times on every choice. That is just an option available to you if you only want a short clip

This example shows that I have added the entire Roller coaster.wmv to my playlist, as well as the 7 minute section that I created.

VBrick Systems **Welcome to New Castle Schools Video**

Live Broadcasts Asset Library

Available Content

	PlatonicSolids.wmv	Info Add To Playlist
	Roller Coaster.wmv	
	The Proof.wmv	

Items in Current Playlist

	Roller Coaster.wmv	Start Time = 15min , End Time =22min	Info Up Down Remove Start End
	Roller Coaster.wmv	Start Time = 0sec , End Time =(end of video)	

Folder: [My Media (Private)] Title: Lesson on motion

[Save Playlist](#) [Delete Playlist](#) [New Playlist](#)

Don't forget to click Save Playlist to save your changes.