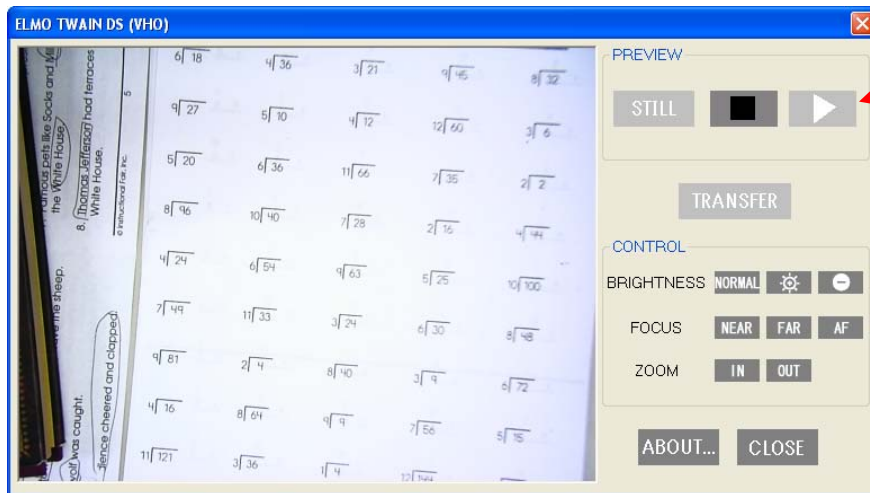
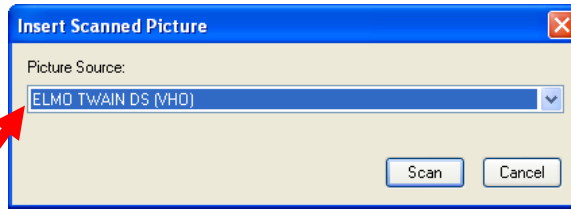


# Using the Elmo TT-02s with a SMART Board

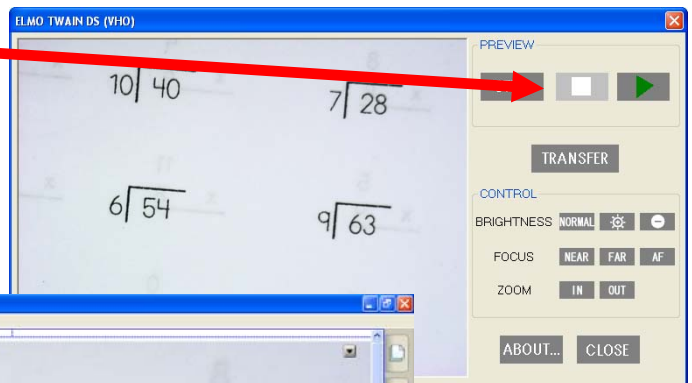
1. Turn on the Elmo. Listen for the computer to make a double sound to indicate that it has connected to the camera with the USB cable.
2. The computer will show the camera image. Push the PC button on the camera to return to the image on the computer.
3. On any open Notebook file, go to the “Insert” menu and select “picture from scanner.” (Yes, I said scanner.)
4. Select ELMO TWAIN DS(VHO) from dropdown list.
5. Click “Scan.” The window that appears has camera controls.



6. Click play

7. Use the onscreen controls to zoom in or out and focus (AF), or use the camera controls

8. Click stop when you get it zoomed and focused.
9. Click “Transfer” and “Close.”



The picture will now enlarge and fill the whole SMART Board screen. Lock the image in place, and you're done!

